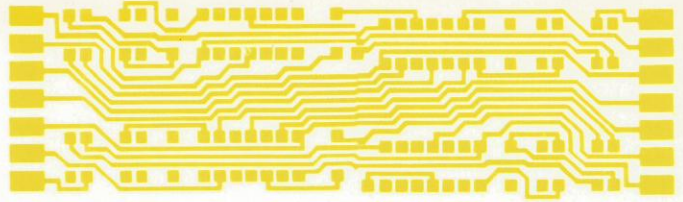









INDICE



Universidad Nacional de Entre Ríos
Facultad de Ingeniería

966

| | | |
|--|--------------------------------|----|
|  | Introducción | 8 |
|  | Circuitos integrados bipolares | 11 |
|  | Componentes integrados | 18 |
|  | Casos prácticos de | |
|  | integración | 25 |
|  | La tecnología MOS | 33 |
|  | La tecnología CMOS | 64 |